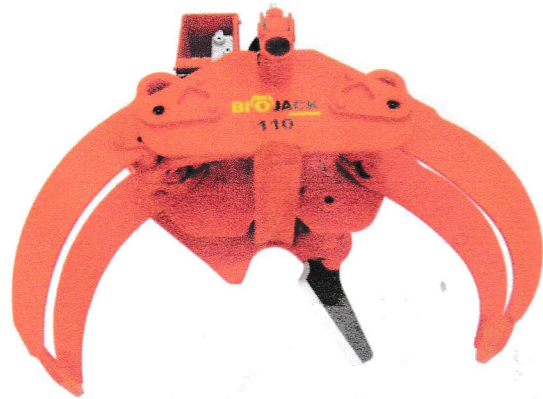


## New products 2014

### Biojack 110:

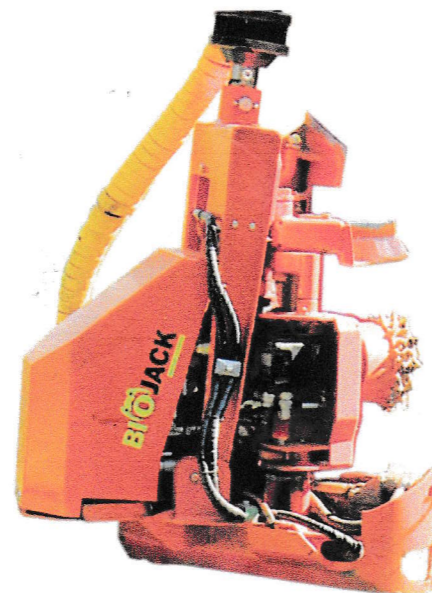
#### 2-IN-1: cutting and loading

- cutting diameter 0 – 120 mm (Scandinavian wood quality)
- easy install, no additional hydraulics are needed (only inlet and outlet hoses)
- the cutting knife retracts inside the frame when the grapple is used for loading
- weight 59 kg
- oil flow rate 10 - 20 l/min
- operating pressure max. 180 bar
- maximum prapple opening 580 mm
- height in felling position about 330 mm
- suitable for agriculture and hobby-/free time purposes
- suitable for base machines: Quad / ATV or agriculture tractors



### Biojack 300 Harvester:

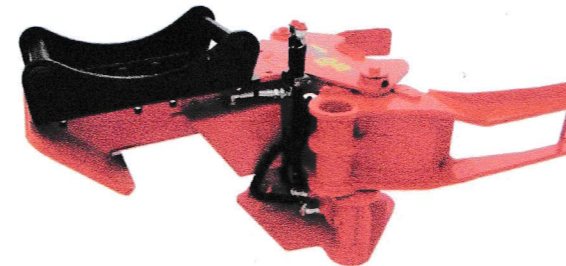
- weight 245 kg
- cutting diameter Ø max. 300 mm
- delimiting diameter Ø min. 30 mm
- delimiting diameter Ø max. 300 mm
- delimiting claws (piece) 3
- operating pressure 170 – 220 bar
- oil flow rate 60 – 70 l/min
- feeding speed max. 3,2 m/s
- inlet and outlet line 3/4"
- leaking pipe 3/8" for the motor saw direct to tank
- multifunktional cabel needed
- cutting with the motor saw (Otion as knife)
- delimiting through the feeding rollers
- lenght measuring as standard
- Optional: volume calculation and timber sorting
- suitable for agriculture- and forest tractors, excavators



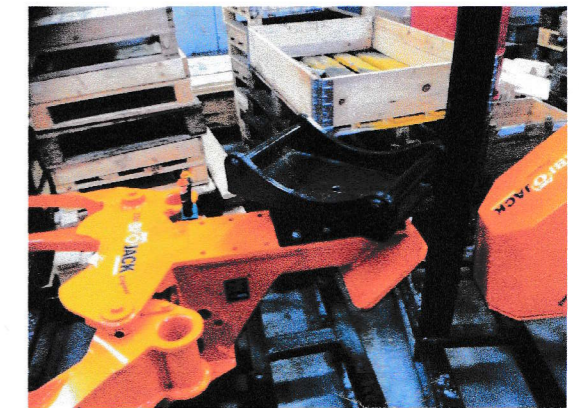
### Some new features for the excavator grapples:

#### Grapple with the extension boom:

- more simple design
- above the construction plate can be assembled different kind of coupling adapters, because of the bolt fastening -> same grapple can be changed to different excavators
- the grapple works like before



#### Grapple with the turning adapter plate:



- Biojack excavator grapple with free floating turning plate
- the plate turns 45° left and right
- free floating, no hydraulic cylinders or other type of steering system
- simplify the work with the excavator. The operator does not to need turn allways the excavator when the grapple can be turned
- soften the shocks against the grapple

#### Grapple 300AV with the vertical installation plate:

